

**For  
Sale**



**760± acres  
Ashley Co., AR**

# Evans Fish Farm



Capital  
Agricultural  
Property  
Services, Inc.

[www.capitalag.com](http://www.capitalag.com)

**Size:** 760± total acres, 500± acres of Catfish ponds

**Location:** Located approximately 8 miles northeast of Hamburg, AR and situated on both sides of a county road.

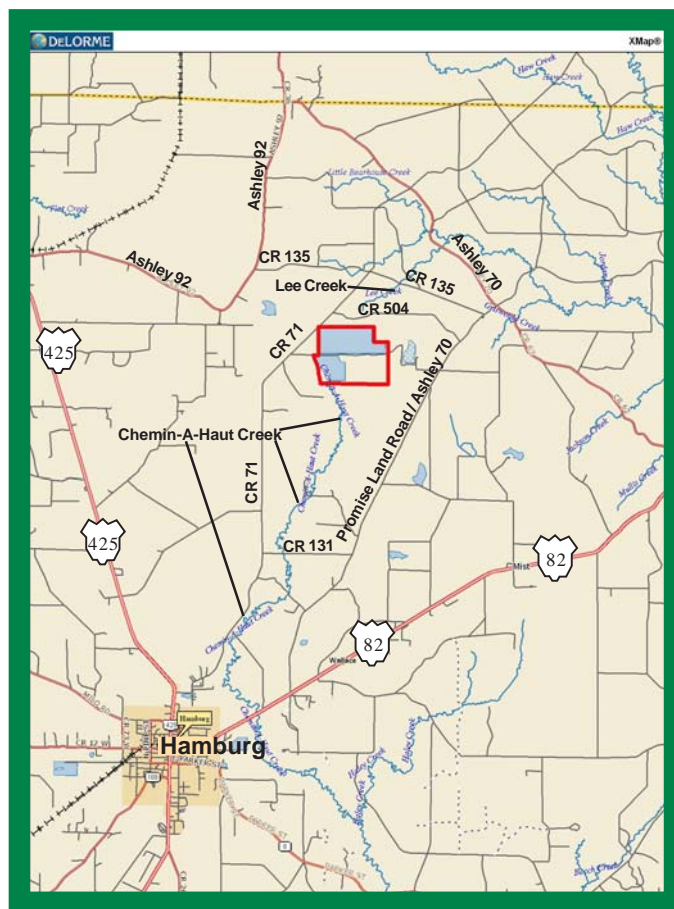
**Description:** This 760± acre farm is one of the premium catfish farms in Arkansas. It has approximately 500 acres of catfish ponds which have a good history of catfish production. The farm has all the improvements to be productive, including a nice shop with living quarters, feed bins, wells and other fixtures. There are a total of 52 catfish ponds, most of which are 20± acres in size. There are 14 smaller ponds ranging in size from 4 to 12 acres. Soils in the area are primarily silt loams, which would make good cropland if an owner or operator wished to return the ponds to row crop production.

**Soils:** Predominantly Herbert, Callaway, Arkabutla and Grenada silt loams

**Possession:** At closing, subject to sale of current catfish inventory.

**Showing:** By appointment only.

**Management:** Professional farm management is available.



*See reverse side for additional maps.*

**For more information contact:  
E. Russell Black, Jr. - Real Estate Broker  
Tel: (662) 334-4627  
Designated Agent for Seller**

The information contained herein is from sources Capital Agricultural Property Services, Inc. (CAPS) considers reliable, such as, but not necessarily including or limited to, Seller, CFSA and NRCS records and data, and information from other government agencies and offices. However, CAPS has not independently verified and does not guarantee the accuracy, completeness or sufficiency of this information. The prospective Buyer is, therefore, advised to independently confirm information provided herein, and any reliance upon this data is made at Buyer's own risk. Similarly, the past history of this property is no guaranty of future performance, which is subject to unpredictable variables such as weather management and operational skills, market factors and general economic conditions. Accordingly, CAPS does not assume, and hereby expressly disclaims, any responsibility for the future operating and investment results of the property.

CAPS' participation in this transaction is solely in the capacity of a real estate broker, and it does not hold itself out as having expertise or specialized knowledge in the fields of environmental science, engineering, chemistry, hydrology, meteorology, geology, seismology, health or financial investments. No statement made by CAPS relating to this property may be relied upon by the buyer as reflecting particular expertise in these or any other areas of specialized knowledge. In the course of conducting a due diligence inspection of the property, the prospective Buyer is strongly advised to consult with such brokers, attorneys, financial advisors or other professional or expert consultants as may be necessary to fully protect the Buyer's rights and interests.

Capital Agricultural Property Services, Inc., as Real Estate Broker, only represents the SELLER in this transaction. This offering is subject to prior sale, matters of title, change of price, rental or conditions and to any special listing conditions or requirements the seller may impose, and it may be withdrawn from the market without advance notice.

# Evans Fish Farm

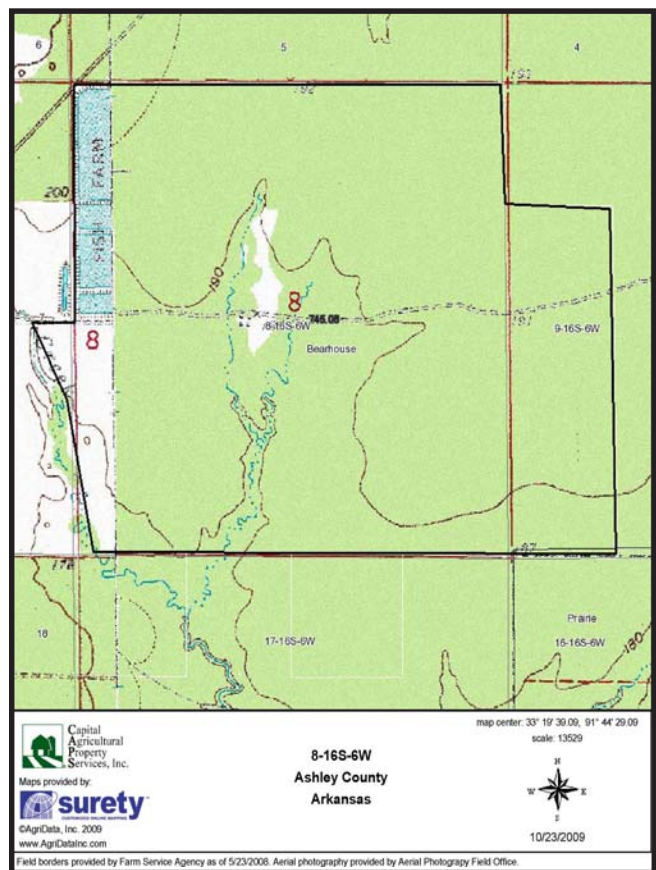
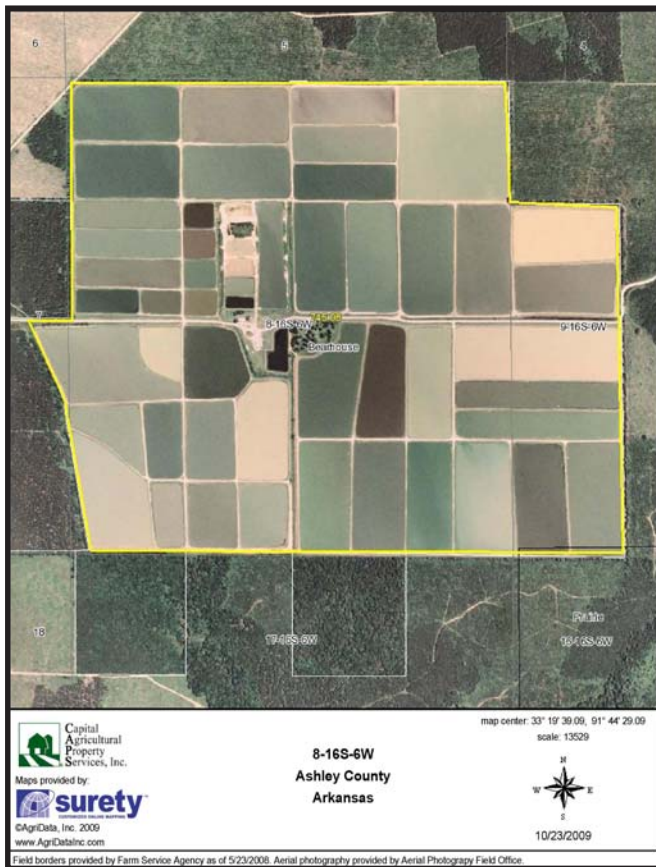
760± acres  
Ashley County, AR



Capital  
Agricultural  
Property  
Services, Inc.

[www.capitalag.com](http://www.capitalag.com)

## Property Satellite and Topography Maps



For additional information contact:  
E. Russell Black, Jr. - Real Estate Broker  
Tel: (662) 334-4627  
Designated Agent for Seller