

# Potlatch Farm



## For Sale



Capital  
Agricultural  
Property  
Services, Inc.

[www.capitalag.com](http://www.capitalag.com)

**4,397.4 + acres**

**Ashley and Chicot Counties, AR**

**Size:** 4,397.4± total acres, 1,765.0± acres farmland, 1,720.3± acres cropland, 44.7± acres ditches, 328.0± acres reservoir and 2,304.4± acres of WRP, ditches and sloughs.

**Improvements:** 328± acres reservoir with 3 relift pumps  
1 turbine well

**Possession:** At closing, subject to existing farmland lease.

**Showing:** By appointment only.

**Management:** Professional farm management is available.

**Location:** This farm is located 6.5 miles east of Wilmot Village, AR, 35 miles southwest of Greenville, MS, and 55 miles northeast of Monroe, LA.

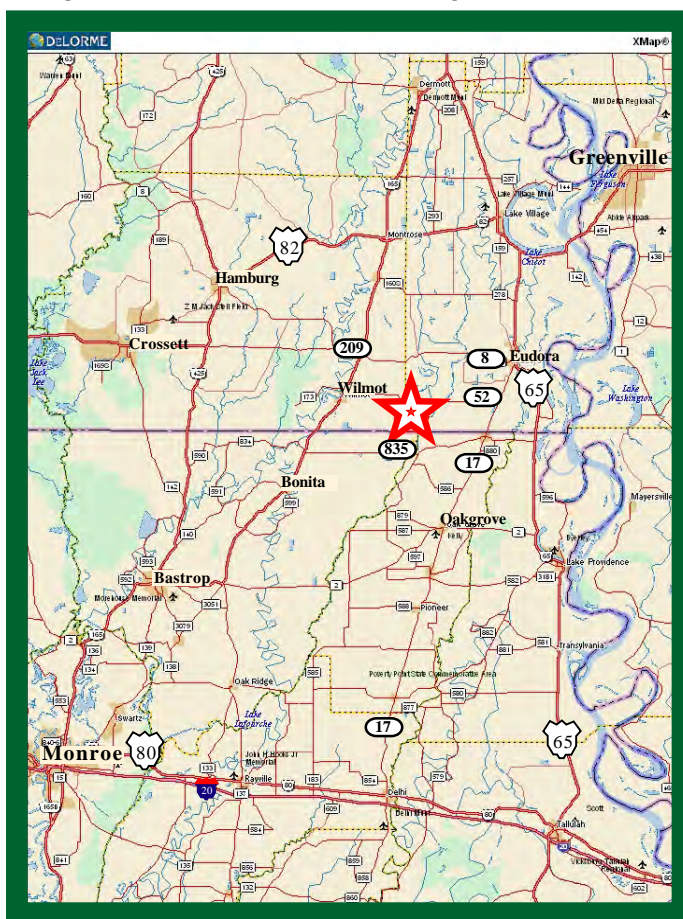
FSA Data: (2011)	Crop	Base Acres	Yield
	Rice	1,720.3	4,498bu.

\* Base acres & payments are **estimates** based upon the Farm Security & Rural Investment Act of 2002 and are subject to final approval of the local Farm Service Agency.

**Description:** This 4,397.4± acre tract is an excellent rice farm with prime deer and duck hunting habitat. It contains 1,720.3 acres of cropland, all but 80 acres of which can be irrigated from a reservoir located on the banks of the Bouef River and 2,304.4 acres of WRP, woods and sloughs. The property is located 6.5 miles east of Wilmot, AR, 35 miles southwest of Greenville, MS, and 55 miles northeast of Monroe, LA. It is accessible in all weather by AR State Highway 52. This farm is naturally level and is easily irrigated from the 328 acre reservoir with water supplied from the Bouef River. The 1,720.3 acres of cropland have been used primarily for rice production, but corn, soybeans and other grains have been grown also. The WRP has been converted to a wildlife habitat paradise with ample populations of deer, ducks, and geese throughout the hunting seasons. The crop land is currently under a cash rent lease that expires at the end of 2011.

**Soils:** Perry clay with a very small percentage of Yorktown and Portland Clay.

**Taxes:** \$11,294.00 (\$2.57 per acre)



See reverse side for additional maps.

**For more information contact:**  
**Murry McClintock - Real Estate Salesperson**  
**Tel: (662) 363-1801**  
**Agent for Seller**

The information contained herein is from sources Capital Agricultural Property Services, Inc. (CAPS) considers reliable, such as, but not necessarily including or limited to, Seller, CFSA and NRCS records and data, and information from other government agencies and offices. However, CAPS has not independently verified and does not guarantee the accuracy, completeness or sufficiency of this information. The prospective Buyer is, therefore, advised to independently confirm information provided herein, and any reliance upon this data is made at Buyer's own risk. Similarly, the past history of this property is no guaranty of future performance, which is subject to unpredictable variables such as weather management and operational skills, market factors and general economic conditions. Accordingly, CAPS does not assume, and hereby expressly disclaims, any responsibility for the future operating and investment results of the property.

CAPS' participation in this transaction is solely in the capacity of a real estate broker, and it does not hold itself out as having expertise or specialized knowledge in the fields of environmental science, engineering, chemistry, hydrology, meteorology, geology, seismology, health or financial investments. No statement made by CAPS relating to this property may be relied upon by the buyer as reflecting particular expertise in these or any other areas of specialized knowledge. In the course of conducting a due diligence inspection of the property, the prospective Buyer is strongly advised to consult with such brokers, attorneys, financial advisors or other professional or expert consultants as may be necessary to fully protect the Buyer's rights and interests.

Capital Agricultural Property Services, Inc., as Real Estate Broker, only represents the SELLER in this transaction. This offering is subject to prior sale, matters of title, change of price, rental or conditions and to any special listing conditions or requirements the seller may impose, and it may be withdrawn from the market without advance notice.

# Potlatch Farm

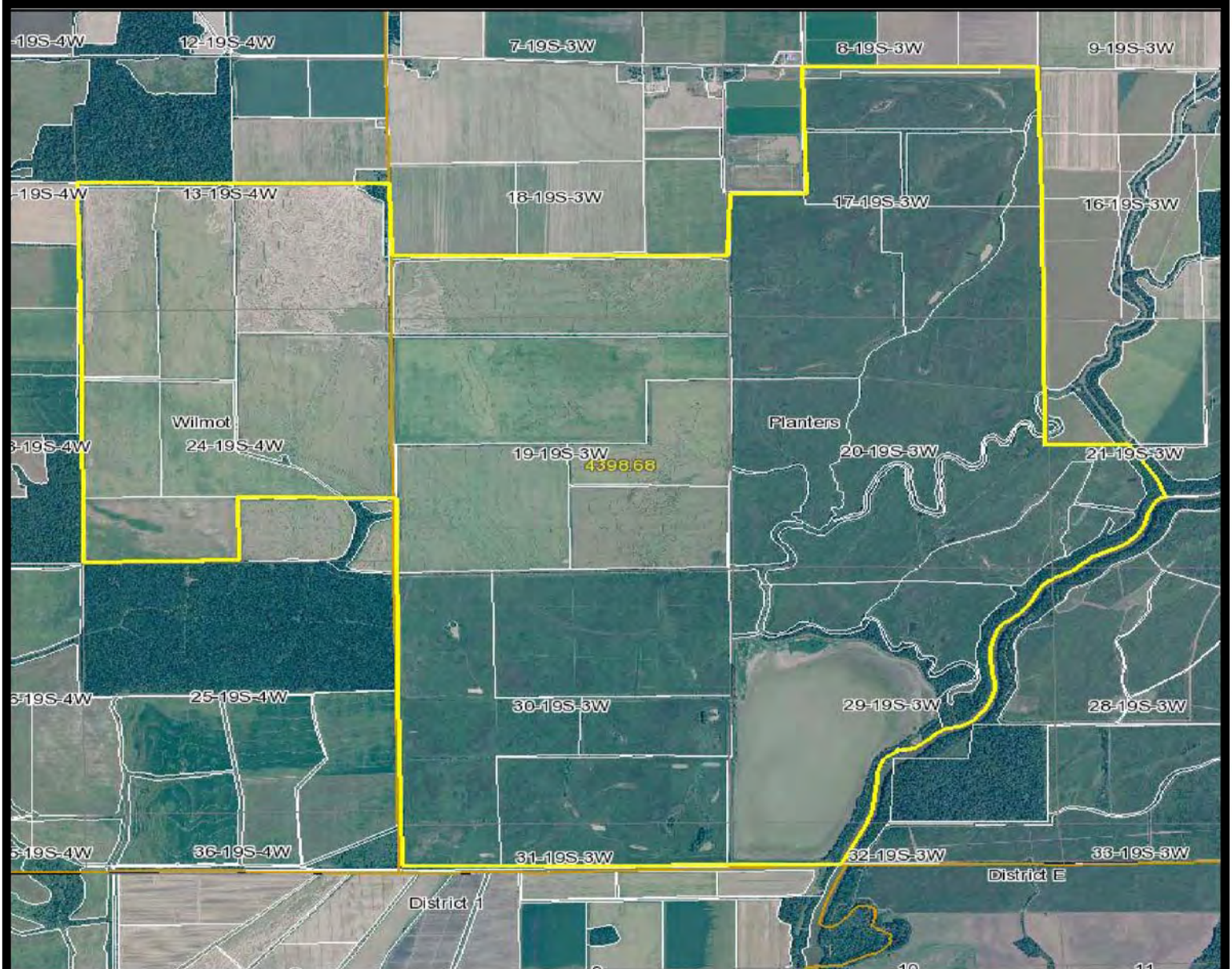
4,397.4 ± acres  
Ashley and Chicot Counties, AR



Capital  
Agricultural  
Property  
Services, Inc.

[www.capitalag.com](http://www.capitalag.com)

## Property Aerial Map



Capital  
Agricultural  
Property  
Services, Inc.

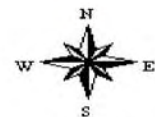
Maps provided by:



©AgriData, Inc. 2011  
[www.AgriDataInc.com](http://www.AgriDataInc.com)

**19-19S-3W**  
**Chicot County**  
**Arkansas**

map center: 33° 1' 41.25, 91° 26' 53.25  
scale: 35598



1/24/2011

Field borders provided by Farm Service Agency as of 5/21/2008. Aerial photography provided by Aerial Photography Field Office.

For more information contact:

**Murry McClintock - Real Estate Salesperson**  
Tel: (662) 363-1801

**Agent for Seller**

# Potlatch Farm

4,397.4 ± acres

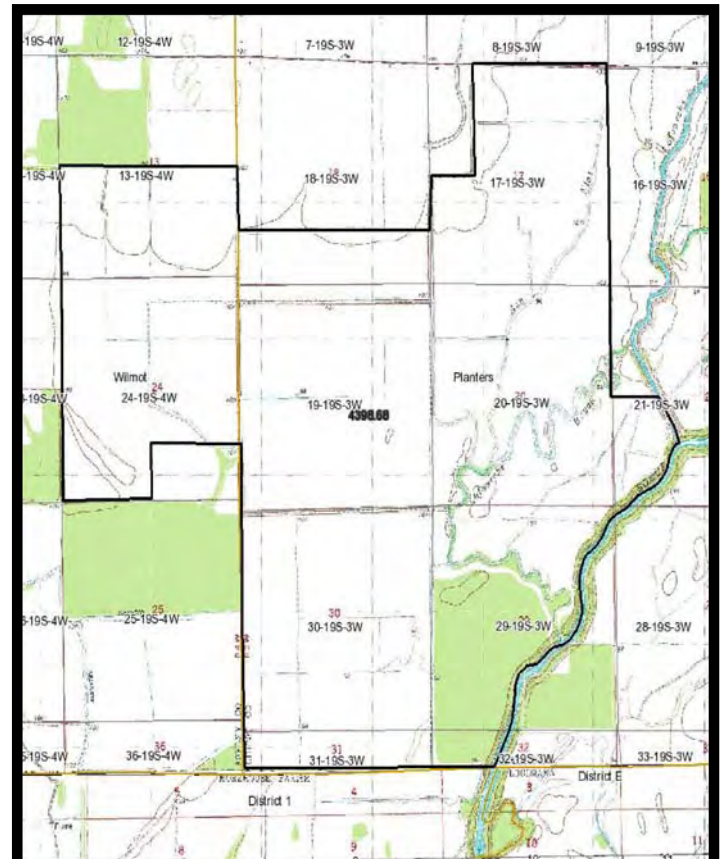
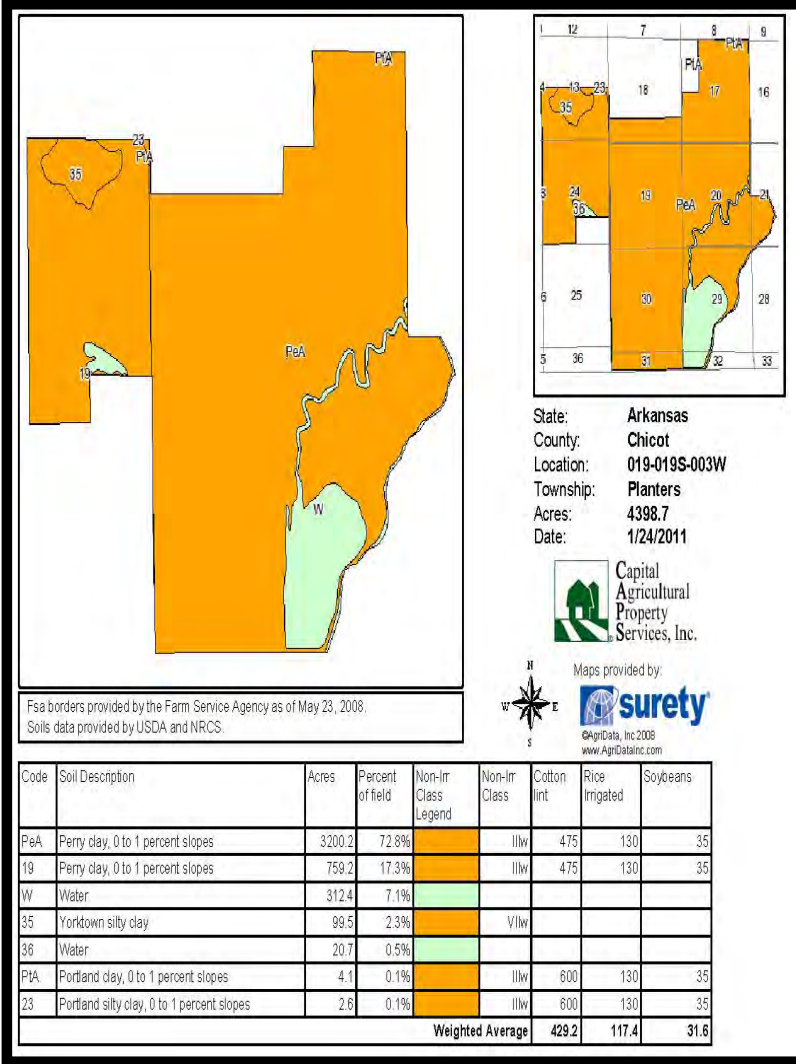
Ashley and Chicot Counties, AR



Capital  
Agricultural  
Property  
Services, Inc.

www.capitalag.com

## Property Soils and Topography Maps



For more information contact:  
Murry McClintock - Real Estate Salesperson  
Tel: (662) 363-1801  
Agent for Seller

Capital Agricultural Property Services, Inc.  
Maps provided by:  
surety  
AgriData, Inc. 2011  
www.AgrIDataInc.com

19-19S-3W  
Chicot County  
Arkansas

map center: 33° 1' 41.25", 91° 26' 53.25"  
scale: 36598



1/24/2011

Field borders provided by Farm Service Agency as of 5/21/2008. Aerial photography provided by Aerial Photography Field Office.

# Potlatch Farm

4,397.4 ± acres

Ashley and Chicot Counties, AR



Capital  
Agricultural  
Property  
Services, Inc.

[www.capitalag.com](http://www.capitalag.com)



**For more information contact:**  
**Murry McClintock - Real Estate Salesperson**  
**Tel: (662) 363-1801**  
**Agent for Seller**