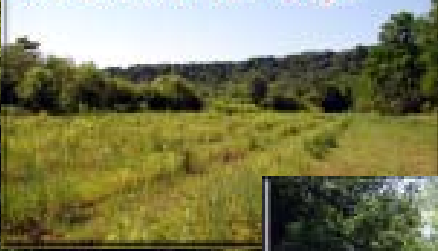


# Rezin Property Bureau Co., IL

373± total acres  
104.4± acres CRP

80± acres of native grasses  
40± acres in row crops



Deer, geese,  
duck, pheasant  
& turkey hunting



Trees  
Trails  
Waterways



Located between the  
Hennepin Canal  
& Bureau Creek



Capital  
Agricultural  
Property  
Services, Inc.

[www.capitalag.com](http://www.capitalag.com)

FOR ADDITIONAL INFORMATION, CONTACT  
LESLIE H. "CHIP" JOHNSTON  
815-875-2950 OR [FARMS1@COMCAST.NET](mailto:FARMS1@COMCAST.NET)

801 Warrenville Rd., Suite 150  
Lisle, IL 60532  
Designated Agent for the Seller

# Rezin Property

## 373± acres in Bureau Co., IL

From hunting to fishing, the Rezin property is ideal for the recreational enthusiast. CRP acreage increases wildlife populations while also generating additional income. The Rezin property is in the flyerway for migratory duck and geese in and along the Illinois River.

**Size:** 373± total acres, 104.4± CRP acres, 40± acres of row crops, 80± acres prairie grasses

**Location:** Approximately 5± miles east of Tiskilwa, Illinois, on CR 23/Tiskilwa Bottom Rd.

**Legal:** Part of Section 7 & 18, Leepertown Township 15N, R10E, and part of Section 12, Arispie Township 15N, R9E, Bureau County, Illinois

**Improvements:** None

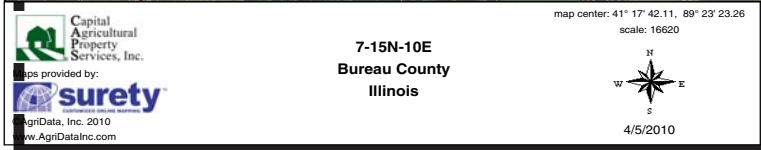
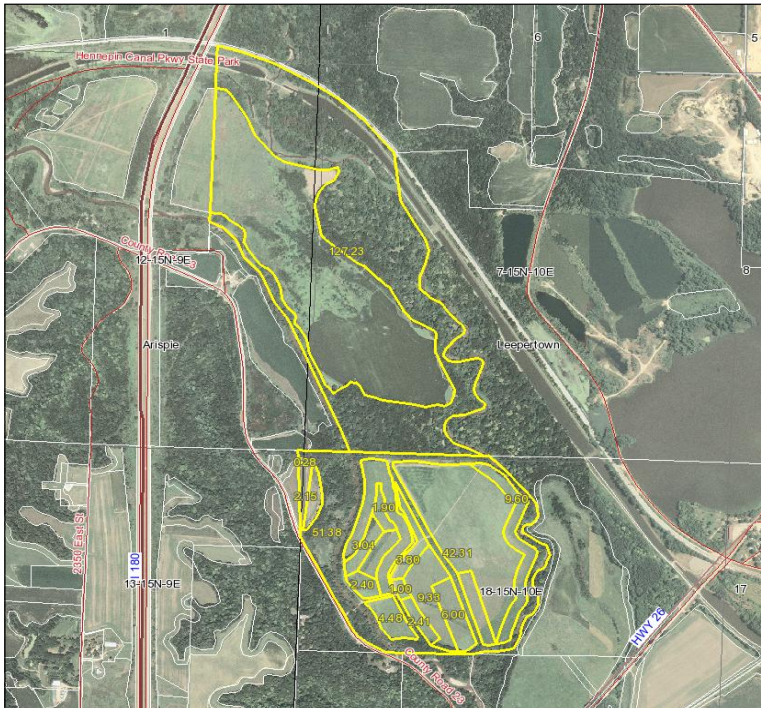
**CRP Info:** \$148 per acre for a total of \$15,451 annually through 2020

**RE Taxes:** \$553.90 (\$1.49/ac.)

**Price:** \$1,529,300 (\$4,100/ac.)

**Terms:** Cash

**Showing:** Please call to schedule an appointment



For more information, contact  
Leslie H. "Chip" Johnston  
815-875-2950  
farms1@comcast.net



Capital  
Agricultural  
Property  
Services, Inc.

[www.capitalag.com](http://www.capitalag.com)



Capital Agricultural Property Services, Inc. (CAPS) has previously entered into an agreement with a client to provide certain real estate brokerage services through a Sales Associate who acts as that client's designated agent. As a result, Sales Associate will not be acting as your agent but as agent of the seller. The information contained herein is from sources Capital Agricultural Property Services, Inc. (CAPS) considers reliable, but is not guaranteed. This offering may be withdrawn from the market or be subject to a change in price or terms without advance notice. Seller reserves the right to reject any and all offers.